

O Series

OUTDOOR LED



The O Series is purpose built for your outdoor LED needs. It features Nichia LED diodes, with proven less color degradation, and great picture quality even after years of use. We offer a wide variety of pixel pitches making the O Series ideal for a number of different applications, including scoreboards, outdoor signage, advertising, digital architectural elements, outdoor venues, and more. If you need a larger display outdoors when viewers are not in close proximity, the O Series is what you need.

FEATURES



Energy Efficient



Ultra Light



Smart Module



High Gray Scale



Fast Assembly



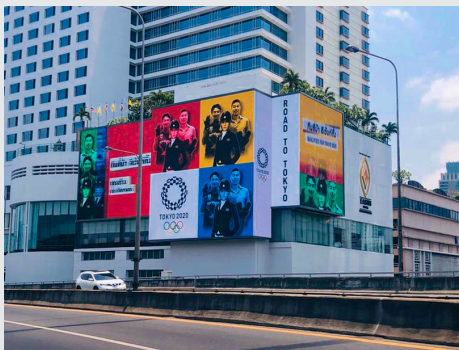
Front & Rear Access



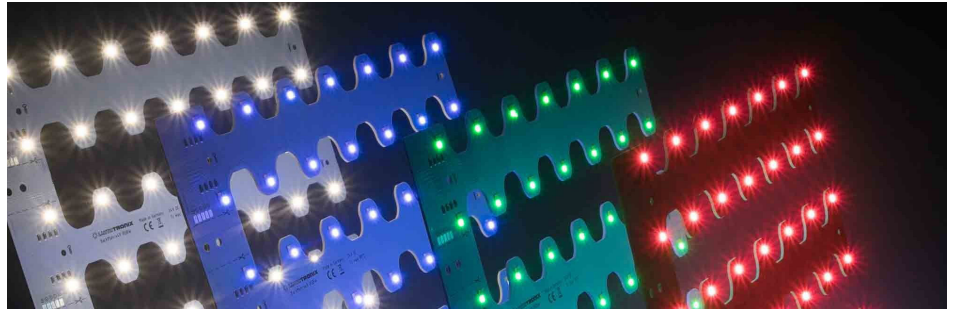
IP65



Flexible in Shape



Through Nichia's development of the industry's first high-brightness blue LEDs and following that with pure green LEDs, Nichia's LEDs have contributed to the evolution of full-color displays. Today, Nichia's LEDs are used in various places around the world such as advertising displays in big cities, information boards in transportation facilities, world famous concerts, and electric scoreboards in stadiums. Nichia will continue to pursue higher luminosity, lower power consumption, higher resolution, and higher visibility for LEDs, and will develop products to further improve large-scale displays. This is why we chose Nichia as one of our primary LED diode suppliers for our outdoor LED displays.



IP 65

Meeting IP65 front and rear standards, the O Series LED display is resistant to dust, water and fully weatherproof.



Thin and light

At about 65 pounds the lightweight/larger cabinets are easy to handle, less expensive to transport and easier to install. This will certainly decrease your labor cost and installation times.



Smart module

Smart modules utilize a unique independent identification technology. This allows for auto-calibration when replacing modules, ability to store calibration data, individually send data to modules, and easily synchronize your settings. The smart module creates a perfectly calibrated display with a push of the button.



SMART MODULE



Call Us: (877) 347-3533
 Email Us: sales@fireflyled.com
 www.fireflyled.com

Specification	O6699SD	O0899SD	O1099SD
Pixel Pitch	6.67 mm	8 mm	10 mm
LED Type	SMD 3 in 1	SMD 3 in 1	SMD 3 in 1
Pixel Density	22545 /m ²	15625 /m ²	10000 /m ²
Module Dimension (W×H)	18.9 in. x 6.3 in. / 480×160 mm	18.9 in. x 6.3 in. / 480×160 mm	18.9 in. x 6.3 in. / 480×160 mm
Module Resolution (W×H)	72×24 px	60×20 px	48×16 px
Cabinet Dimension (W×H×D)	37.8 in. x 37.8 in. / 960×960×120 mm	37.8 in. x 37.8 in. / 960×960×120 mm	37.8 in. x 37.8 in. / 960×960×120 mm
Cabinet Resolution (W×H)	144×144 px	120×120 px	96×96 px
Cabinet Weight	67 lbs/30 kg	67 lbs/30 kg	67 lbs/30 kg
Cabinet Material	Aluminum	Aluminum	Aluminum
Brightness	6500 nits	7000 nits	6500-7000 nits
Color Temperature	3,500~9,300 k	3,500~9,300 k	3,500~9,300 k
Contrast Ratio	≥ 2000 :1	≥ 2000 :1	≥ 2000 :1
Gray Scale	16 bit	16 bit	16 bit
Refresh Rate	≥3840 Hz	≥3840 Hz	≥3840 Hz
Viewing Angle	H 140° / V 120°	H 140° / V 120°	H 140° / V 120°
Driving Method	1/6 S	1/5 S	1/2 S
Access	Front / Rear Access	Front / Rear Access	Front / Rear Access
Ingress Protection	IP65	IP65	IP65
LED Lifespan	100,000 h	100,000 h	100,000 h
Working Temperature	-4°F~122°F	-4°F~122°F	-4°F~122°F
Storage Temperature	-40°F~176°F	-40°F~176°F	-40°F~176°F
Working Humidity (RH)	0~90%	0~90%	0~90%
Power Supply	AC 100-240 V	AC 100-240 V	AC 100-240 V
Max. Power Consumption	600 watts	600 watts	600 watts
Avg. Power Consumption	200 watts	200 watts	200 watts

