

Featuring Multiple Size Options & Pixel Pitches

We offer the O Series in three different sizes 3.15' x 3.15' (960mm x 960mm), 4.2' x 3.15' (1280mm x 960mm), and 2.1' x 3.15' (640mm x 960mm). The various size options can help when trying to target a specific display size or aspect ratio. In pixel pitches, we offer 5mm, 6.67mm, 8mm, and 10mm options making it ideal for a number of different applications. We offer right angles for corner displays and even custom designs as well.

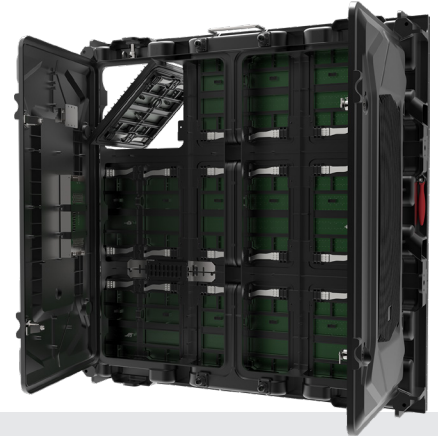
O Series

OUTDOOR LED



Front and Rear Access

The O Series features both front and rear access. This can simplify the installation process, and allow for a number of configurations, whether it is double sided, on the side of a building, on a pole, or a monument style LED Display. This also makes servicing the LED Display super easy.



IP 65

The front and rear protection level of the display reaches IP65, dustproof, waterproof and moisture-proof, features ensure the display still works normally in all kinds of complicated weather conditions. And the cabinets are made of aluminum-magnesium alloy, which has good heat dissipation performance, high temperature mitigation and corrosion resistant.

The O Series is purpose built for your outdoor LED needs. It features a high precision design with corrosion resistant aluminum-magnesium alloy frame. We offer a wide variety of pixel pitches and sizes making the O Series ideal for a number of different applications, including scoreboards, outdoor signage, advertising, digital architectural elements, outdoor venues, and more. If you need a high quality digital outdoor LED Display at a great value, the O Series is what you need.

FEATURES



Energy Efficient



Ultra Light



Smart Module



High Gray Scale



Fast Assembly



Front & Rear Access



IP65

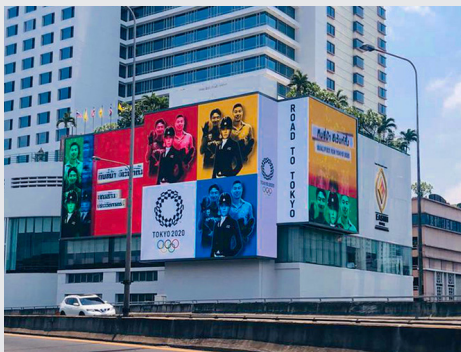


Flexible in Shape



Thin and light

At about 65 pounds the lightweight/larger cabinets are easy to handle and less expensive to transport. This will certainly decrease your labor cost and installation times.



Call Us: (877) 347-3533

Email Us: sales@fireflyled.com

www.fireflyled.com

Specification				
Pixel Pitch	5 mm	6.67 mm	8 mm	10 mm
LED Type	SMD	SMD	SMD	SMD
Cabinet Dimension (W×H)	37.8 in. x 37.8 in. / 960×960 mm	37.8 in. x 37.8 in. / 960×960 mm	12.6 in. x 12.6 in. / 320×320 mm	12.6 in. x 12.6 in. / 320×320 mm
Cabinet Resolution (W×H)	64×32 px	48×48px	120×120px	96×96px
Pixel Density	40000 /m ²	22500 /m ²	15625 /m ²	10000 /m ²
Cabinet Weight	67 lbs/ft ² / 37 kg/m ²	67 lbs/ft ² / 37 kg/m ²	67 lbs/ft ² / 37 kg/m ²	67 lbs/ft ² / 37 kg/m ²
Avg. Power Consumption	200 watts	200 watts	200 watts	200 watts
Max. Power Consumption	650 watts	650 watts	650 watts	650 watts
Brightness	3500~6500 nits	6500~8500 nits	6500~8500 nits	6500~8500 nits
Refresh Rate	1920~3840 Hz	1920~3840 Hz	1920~3840 Hz	1920~3840 Hz
Driving Method	1/6 S	1/8 S	1/4 S	1/2 S
Gray Scale	14~16 bit	14~16 bit	14~16 bit	14~16 bit
Contrast Ratio	2000 :1	2000 :1	2000 :1	2000 :1
Access	Front / Rear Access	Front / Rear Access	Front / Rear Access	Front / Rear Access
Ingress Protection	Front IP65 / Rear IP54	Front IP65 / Rear IP54	Front IP65 / Rear IP54	Front IP65 / Rear IP54
Working Temperature	-4°F~122°F	-4°F~122°F	-4°F~122°F	-4°F~122°F
Storage Temperature	-4°F~140°F	-4°F~140°F	-4°F~140°F	-4°F~140°F
Power Supply	AC 100-240 V	AC 100-240 V	AC 100-240 V	AC 100-240 V

