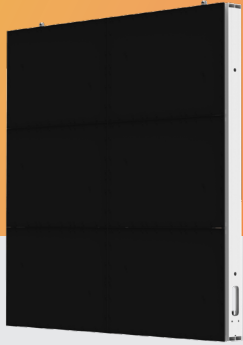


Featuring Multiple Size Options & Pixel Pitches

We offer the O Series in three different sizes 3.15' x 3.15' (960mm x 960mm), 4.2' x 3.15' (1280mm x 960mm), and 2.1' x 3.15' (640mm x 960mm). The various size options can help when trying to target a specific display size or aspect ratio. In pixel pitches, we offer 5mm, 6.67mm, 8mm, and 10mm options making it ideal for a number of different applications. We offer right angles for corner displays and even custom designs as well.

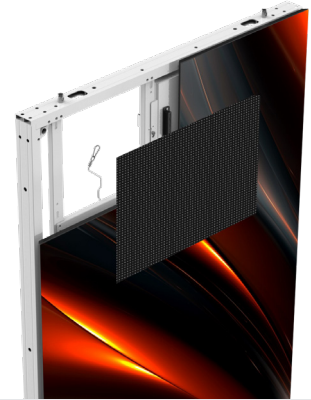
O Series

OUTDOOR LED



Front and Rear Access

The O Series features both front and rear access. This can simplify the installation process, and allow for a number of configurations, whether it is double sided, on the side of a building, on a pole, or a monument style LED Display. This also makes servicing the LED Display super easy.



The O Series is purpose built for your outdoor LED needs. It features a high precision design with corrosion resistant aluminum-magnesium alloy frame. We offer a wide variety of pixel pitches and sizes making the O Series ideal for a number of different applications, including scoreboards, outdoor signage, advertising, digital architectural elements, outdoor venues, and more. If you need a high quality digital outdoor LED Display at a great value, the O Series is what you need.

IP 65

The front and rear protection level of the display reaches IP65, dustproof, waterproof and moisture-proof, features ensure the display still works normally in all kinds of complicated weather conditions. And the cabinets are made of aluminum-magnesium alloy, which has good heat dissipation performance, high temperature mitigation and corrosion resistant.

FEATURES



Energy Efficient



Ultra Light



Smart Module



High Gray Scale



Fast Assembly



Front & Rear Access



IP65

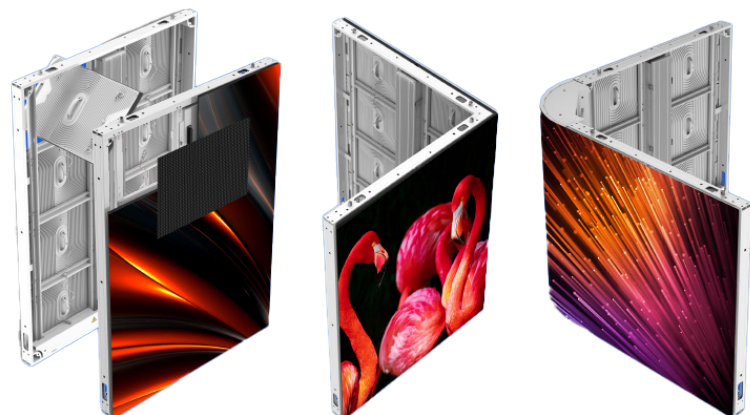


Flexible in Shape



Unique Configurations

The O Series allows for unique L-shaped and curved splicing with creative display configurations for custom applications.



Call Us: (877) 347-3533
 Email Us: sales@fireflyled.com
 www.fireflyled.com

Specification			
Pixel Pitch	6.67 mm	8 mm	10 mm
LED Type	SMD	SMD	SMD
Panel Dimension (W×H)	3.15×3.15×0.26 ft/ 960×960×78 mm		
Panel Resolution (W×H)	144×144px	120×120px	96×96px
Pixel Density	22500 /m ²	15625 /m ²	10000 /m ²
Panel Weight	5.73 lbs/ft ² / 28 kg/m ²		
Avg. Power Consumption	166 watts	184 watts	184 watts
Max. Power Consumption	664 watts	737 watts	737 watts
Brightness	6500~8500 nits		
Refresh Rate	7680 Hz		
Gray Scale	16 bit		
Color Temperature	2000~10000 (Adjustable)		
Contrast Ratio	7000 :1	8000 :1	12,000 :1
Access	Front / Rear Access		
Ingress Protection	IP66		
Working Temperature	-4°F~122°F	-4°F~122°F	-4°F~122°F
Storage Temperature	-4°F~140°F	-4°F~140°F	-4°F~140°F
Power Supply	AC 110-220 V		

